



The DUKE



1941



THE DUKE



PUBLISHED BY
THE ANNUAL BOARD

SUTHERLAND

IOWA

VOLUME III.



FORWARD

IN PRODUCING THIS BOOK WE HAVE SOUGHT TO BRING TO OUR PARENTS, TEACHERS AND FRIENDS A MEMOIR THAT IS EVERLASTING. ON ITS PAGES ARE PRINTED THE ACCOUNTS OF ACTIVITIES THAT ARE PECULIARLY AN AMERICAN SCHOOL'S OWN. IN SO WRITING WE GIVE THANKS THAT IT IS YET OUR PRIVILEGE TO WRITE AND TO EXPRESS OUR OPINIONS AS WE DESIRE. WE HOPE THAT THIS PRIVILEGE MAY BE HAD BY THE ENDLESS GENERATIONS TO COME, FOREVER AND EVER UNTIL THE END OF TIME.



To
COACH MAAS

WHO IS DISTINGUISHED BY FINE AND OUT-
STANDING SPORTSMANSHIP, WHO HAS GIVEN
HEARTY AND INSPIRING COOPERATION TO ALL
MANNER OF SCHOOL LIFE AND WHO THROUGH
PARTICIPATION IN ALL SCHOOL ACTIVITIES HAS
IMBUED IN THE STUDENTS A NEW CONCEPTION
OF LOYALTY, WE DEDICATE THE 1941 DUKE.



ADMINISTRATION

CLASSES

ACTIVITIES

FEATURES

ADVERTISING

EDITOR

MAXINE LYNN

ASSOCIATE EDITOR

MYRNE INNES

SPORTS EDITOR

ELMORE HAYES

ACTIVITY EDITOR

CLEONE LINDER

ADVERTISING EDITOR

DORIS WAGGONER

BUSINESS MANAGERS

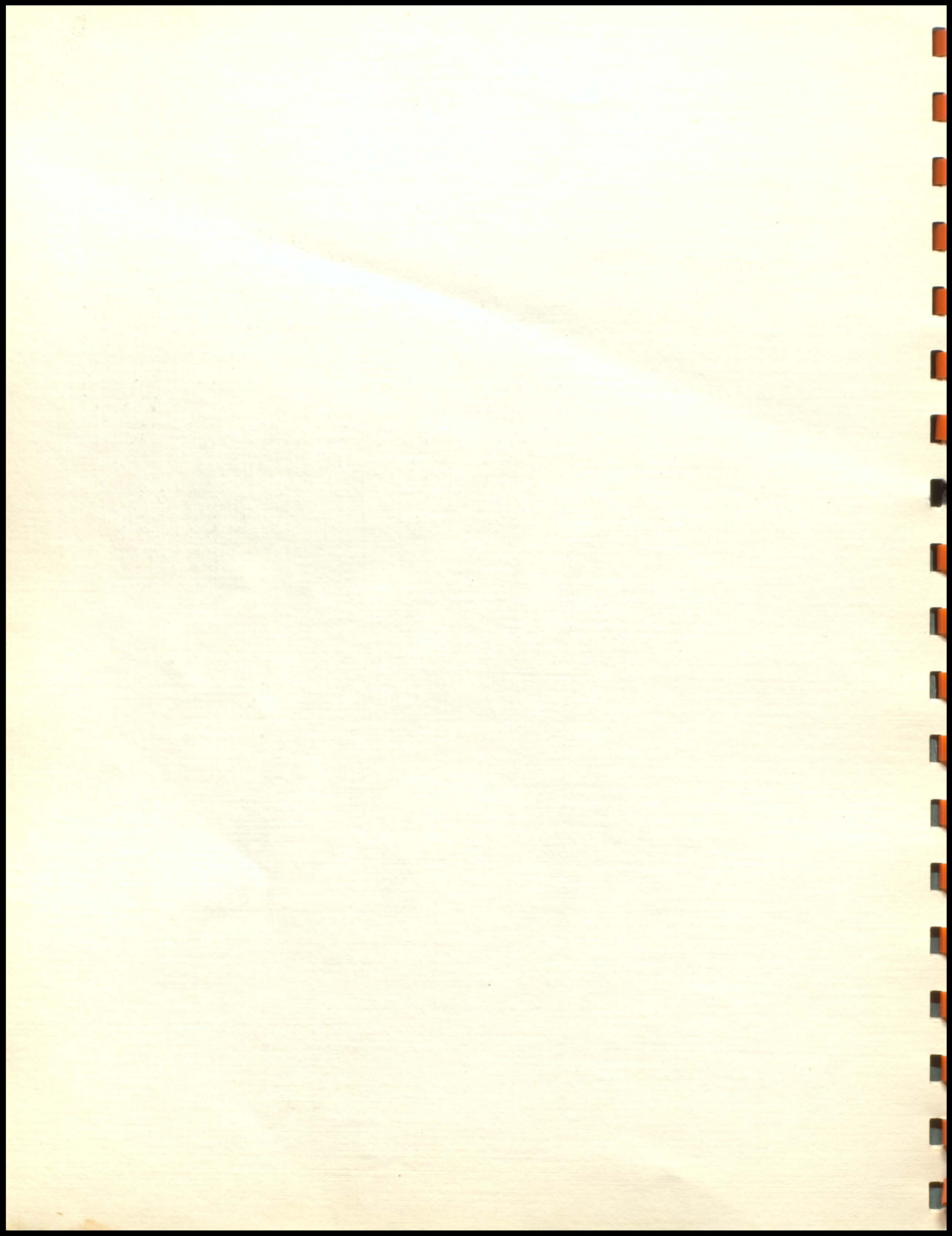
HARRY HENDRICK

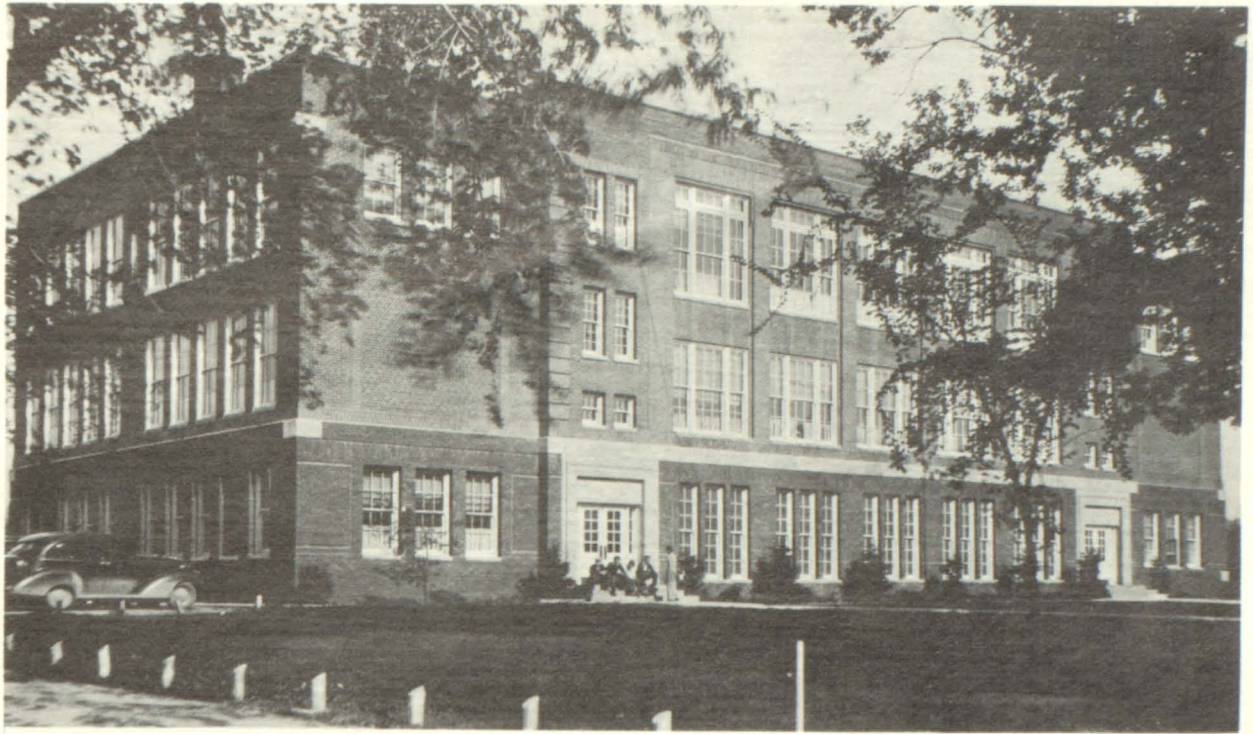
DONALD OLHAUSEN

SPONSOR

ETHEL TUNTLAND







THIS IS BUT ONE OF THE THOUSANDS OF PUBLIC SCHOOLS IN THE UNITED STATES, BUT THIS ONE REPRESENTS EVERYTHING FOR WHICH EDUCATION HAS STOOD. IT WAS FOUNDED BY A PEOPLE WHO BELIEVED IN PROGRESS AND TODAY IT STANDS A SYMBOL OF YOUTH--AMERICAN YOUTH--THE YOUTH THAT YET CAN HOLD ITS HEAD HIGH IN AN ATMOSPHERE OF FREEDOM AND LEARN, UNTARNISHED BY THE HANDS OF MAN, THE WONDERFUL TRUTHS AND LAWS OF THE UNIVERSE. / TO THE COMMUNITY AND THE BOARD OF EDUCATION WHO HAVE SO HELPED TO GIVE US THIS WE PAY TRIBUTE AND HOPE THAT SOMETIME THE YOUTH OF THE WORLD WILL HAVE THIS PRIVILEGE.



SUPT. BAIRD



PRIN. SAGNESS

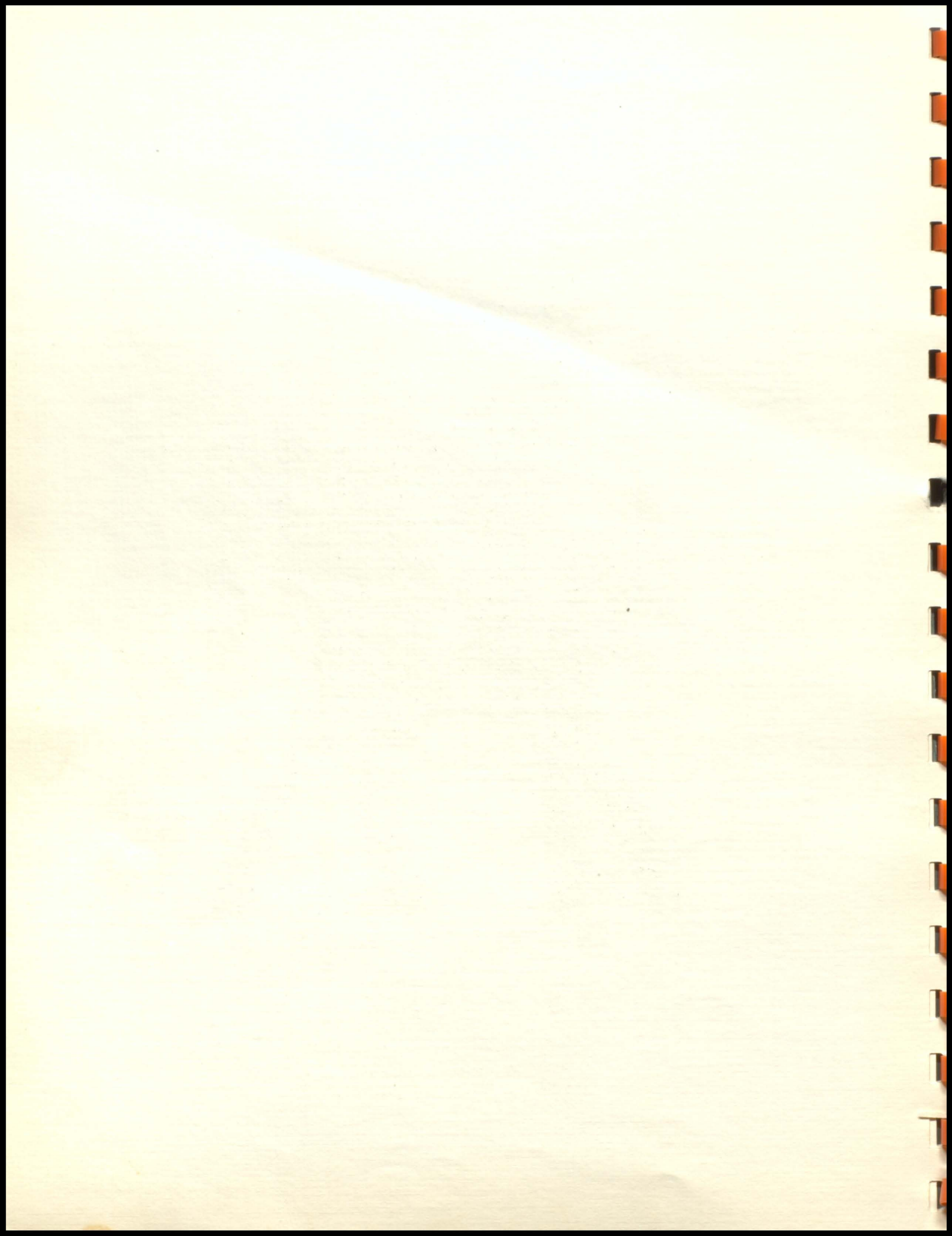


TOP ROW: BUCHER, BRIGGS, MAMMEN, MAURER, MAAS, CHRISTENSON, WOOD, LOCKE, LYNCH, BAIRD, SAGNESS, CUNNINGHAM, BEACHLER, KRUSE.

FACULTY

ELSIE CUNNINGHAM-PRIMARY.....	IOWA STATE TEACHERS COLLEGE
ELEANOR BRIGGS-SECOND.....	IOWA STATE TEACHERS COLLEGE
KATHLEEN BUCHER-THIRD.....	IOWA STATE TEACHERS COLLEGE
ESTHER WOOD-FOURTH.....	IOWA STATE TEACHERS COLLEGE
MARGARET LYNCH-FIFTH.....	IOWA STATE TEACHERS COLLEGE
MARCELLA LOCKE-JR. HIGH ENGLISH.....	B. A. MORNINGSIDE
MARGARET CHRISTENSON.....	JR. HIGH HISTORY
	IOWA STATE TEACHERS COLLEGE
MAURICE MAURER-JR. HIGH PRINCIPAL.....	B. S. BUENA VISTA COLLEGE
IRENE MAMMEN-HOME ECONOMICS.....	B. S. IOWA STATE COLLEGE
MABEL KRUSE-MUSIC.....	B. A. IOWA STATE TEACHERS COLLEGE
HELEN BEACHLER-ENGLISH.....	B. A. WESTERN UNION COLLEGE
EVERETT MAAS-COACH.....	B. A. BUENA VISTA COLLEGE
ETHEL TUNTLAND-COMMERCIAL.....	B. S. UNIVERSITY OF SOUTH DAKOTA
CARL SAGNESS-HIGH SCHOOL PRINCIPAL....	PH. B. CREIGHTON UNIVERSITY
EDWARD D. BAIRD-SUPERINTENDENT.....	B. A. CORNELL
	M. A. UNIVERSITY OF IOWA







THOMAS BARRY

GLEE CLUB 4; MIXED CHORUS 3; NEWS STAFF.

"TALL, DARK, AND HUMOROUS."



CATHERINE SWEENEY

GLEE CLUB 4; MIXED CHORUS 4; GIRLS' SEXTET 1; VOCAL SOLO 4; BAND 4; JUNIOR PLAY; NEWS STAFF.

"A GIRL WITH THOSE MUSICAL WAYS."



KENNETH McCORMACK

FOOTBALL

"HE'S WELL-'RED'."

EVELYN HOFFMAN

GLEE CLUB; MIXED CHORUS; GIRLS' SEXTET; VOCAL SOLO; BAND; INSTRUMENTAL SOLO; GIRLS' "S" CLUB; JUNIOR PLAY; JUNIOR SECY-TREAS.; NEWS STAFF; CHEERLEADER; DRUM MAJOR-ETTE.

"PERT AND PRETTY."



ELDREDA MARTIN

GLEE CLUB 2; GIRLS' "S" CLUB; G. A. A. LEADER.

"SWEET AND SERENE."



DONALD OLHAUSEN

GLEE CLUB 3; MIXED CHORUS 1; "S" CLUB; JUNIOR PLAY; BASEBALL 3; ANNUAL.

"HE'S SMALL, BUT HE GETS AROUND."

LARENE DAU

"SHE PUTS HER CARES IN A POCKET WITH A HOLE IN IT."



ALFRED JENSEN

GLEE CLUB 4; MIXED CHORUS; BAND 4; BRASS SEXTET 1; "S" CLUB; JUNIOR PLAY; FOOTBALL 4; BASKETBALL 2; BASEBALL.

"HE'S TOPS WITH US."

ROBERT NIELSEN

GLEE CLUB 3; MIXED CHORUS; "S" CLUB; FOOTBALL 4; BASKETBALL 4; BASEBALL 1; TRACK.

"LIVE FOR TODAY."



DELLA MARIE STEELE

BAND 2 $\frac{1}{2}$.

"THE BIGGEST SMILE OF ALL."



RUTH ELLEN JONES

GLEE CLUB; MIXED CHORUS; GIRLS' SEXTET; VOCAL SOLO; INSTRUMENTAL TRIO; MIXED QUIN- TET; BAND; REED QUINTET; INSTRU- MENTAL SOLO; GIRLS' "S" CLUB; JUNIOR PLAY; CHEERLEADER.

"SHE'S GOT WHAT IT TAKES."

CLAUS THIESSEN

SOPH. PRES.; FOOT- BALL.

"INERTIA IN MOTION."

HELEN STRUVE

GLEE CLUB $\frac{1}{2}$; NEWS STAFF.

"WALKING DREAM."

DAROLD CULP

"S" CLUB; JUNIOR PLAY; FOOTBALL; BASKETBALL; BASE- BALL.

"TIME ON MY HANDS."

PHYLLIS CRANE

GLEE CLUB $2\frac{1}{2}$; MIX- ED CHORUS $2\frac{1}{2}$; JUN- IOR PLAY.

"LOVE IS NEWS, BUT NOT TO HER."



EDWARD BRECHWALD

GLEE CLUB; MIXED CHORUS; BAND; REED QUINTET; BRASS SEX- TET; BOYS' "S" CLUB; JUNIOR CLASS VICE- PRES.; SENIOR SECY- TREAS.; FOOTBALL; BASKETBALL.

"HIGH-POWERED BRAIN THAT NEEDS GAS."

EDNA WOODALL

GIRLS' "S" CLUB; NEWS STAFF.

"DELIGHTFUL."

ERNEST LOHFF

FOOTBALL; BASE- BALL.

"HIS OCCUPATION IS JUST STUFF."

PEGGY NELSON

GLEE CLUB; GIRLS' "S" CLUB; G. A. A. LEADER.

"TRUE ENGLISH BEAU- TY."

DONALD HASH

GLEE CLUB; MIXED CHORUS; BAND; "S" CLUB; JUNIOR PLAY; SOPH. VICE-PRES.; FOOTBALL; BASKET- BALL; BASEBALL.

"SWELL AS THEY COME."





DOROTHY MARTIN

BAND 4; REED QUIN-
TET; INSTRUMENTAL
SOLO; INSTRUMENTAL
TRIO; GIRLS' "S"
CLUB; G. A. A.
PRESIDENT.

"GOOD LOSERS NEVER
LOSE."

ROBERT JENNER

Boys' "S" CLUB;
FOOTBALL 4.

"HANDSOME IS AS
HANDSOME DOES AND
HE DOES ALL RIGHT."

DORIS WAGGONER

BAND; BRASS SEX-
TET; G. A. A.
LEADER; ANNUAL.

"QUIETLY OUT-
STANDING."

ELMORE HAYES

GLEE CLUB; MIXED
CHORUS; "S" CLUB;
JUNIOR PLAY; FOOT-
BALL; BASEBALL;
ANNUAL.

"THE GIRLS ALL
THINK HE'S HAND-
SOME."

LOIS WOOLSTON

GLEE CLUB; MIXED
CHORUS; BAND; "S"
CLUB; FLAG-BEARER.

"ACCENT ON YOUTH."



BARBARA JONES

GLEE CLUB; MIXED
CHORUS; GIRLS'
SEXTET; VOCAL SOLO;
GIRLS' TRIO; BAND;
"S" CLUB; JUNIOR
CLASS PLAY.

"PERPETUAL E-MO-
TION."

MYRNE INNES

GLEE CLUB; MIXED
CHORUS; GIRLS'
SEXTET; BAND; NEWS
STAFF; ANNUAL.

"POISE WITHOUT
POSE."



HARRY HENDRICK

FOOTBALL.

"THE TROUBLE WITH
ME IS MY DAILY
'DOESN'T'."



KATHERINE THIESSEN

GLEE CLUB; G. A. A.
TREAS.; JUNIOR PLAY.

"IT'S NICE TO BE
NATURAL WHEN YOU'RE
NATURALLY NICE."



BERNARD FARQUAHAR

"HIS LINE OF THOUGHT
GETS SNARLED."





CLEONE LINDER

GLEE CLUB; MIXED CHORUS; ANNUAL.

"IT TAKES ENERGY TO DO ENERGETIC THINGS."

WILBUR WAGGONER

"S" CLUB; JUNIOR PLAY; SENIOR VICE-PRES.; FOOTBALL; BASKETBALL; BASEBALL.

"HE LENDS BOTH HEAT AND LIGHT TO AN ARGUMENT."

MAXINE LYNN

GLEE CLUB; MIXED CHORUS; VOCAL SOLO; BAND; MIXED QUINTET; JUNIOR PLAY; FRESH. AND SENIOR PRES.; NEWS STAFF; ANNUAL.

"GIVE ME A HORSE."



ROBERT WAGGONER

GLEE CLUB $1\frac{1}{2}$; "S" CLUB; FOOTBALL; BASKETBALL; TRACK; BASEBALL.

"BASKETBALL LOOKS EASY THE WAY HE PLAYS IT."



VERNA MAE MATZ

GLEE CLUB; "S" CLUB; G. A. A. LEADER; JUNIOR PLAY; NEWS STAFF.

"WHEN SHE'S GOOD, SHE'S VERY GOOD...."



DELMAR WAGGONER

GLEE CLUB; MIXED CHORUS; "S" CLUB PRES.; FRESH. SECY-TREAS.; JUNIOR PRES.; BASKETBALL.

"GIVE ME VICTORY OR GIVE ME AN ALIBI."



SCHOOL CALENDAR

SEPT.	2---	SCHOOL CONVENES
	20---	FOOTBALL-PETERSON (HERE)
	27---	FOOTBALL-CLEGHORN (THERE)
OCT.	4---	FOOTBALL-SANBORN (HERE)
	11---	FOOTBALL-HARTLEY (HOMECOMING)
	18---	FOOTBALL-PRIMGHAR (THERE)
	25---	FOOTBALL-ALTA (HERE)
NOV.	1---	FOOTBALL-PAULLINA (HERE)
	22---	JUNIOR CLASS PLAY
	28-29	THANKSGIVING VACATION
DEC.	2---	FOOTBALL BANQUET
	3---	BASKETBALL-PETERSON (HERE)
	6---	BASKETBALL-CALUMET (HERE)
	13---	BASKETBALL-CLEGHORN (HERE)
	16---	CHRISTMAS CANTATA
	19---	BASKETBALL-MERIDAN (THERE)
	20---	CHRISTMAS VACATION
JAN.	6---	SCHOOL CONVENES
	7---	BASKETBALL-PAULLINA (HERE)
	10---	BASKETBALL-ALTA (THERE)
	16-18	SIoux VALLEY TOURNAMENT-ALTA
	24---	BASKETBALL-SIOUX RAPIDS (HERE)
	28---	BASKETBALL-HARTLEY (THERE)
	31---	BASKETBALL-SANBORN (HERE)
FEB.	6-8-	COUNTY TOURNAMENT-PRIMGHAR
	14---	BASKETBALL-AURELIA (HERE)
	18---	BASKETBALL-PRIMGHAR (THERE)
	21---	BASKETBALL-PAULLINA (THERE)
MARCH	1---	BASKETBALL-EVERLY (THERE)
	6-8-	SECTIONAL TOURNAMENT-SANBORN
	10---	BAND CONCERT
	21---	VOCAL MUSIC PROGRAM
APRIL	3-5-	DISTRICT MUSIC CONTEST-SPENCER
	10---	BASEBALL-SANBORN (HERE)
	15---	BASEBALL-CALUMET (THERE)
	18---	BASEBALL-PAULLINA (HERE)
	22---	BASEBALL-HARTLEY (THERE)
	24-26	COUNTY TOURNAMENT-MONETA
	29-30	SENIOR CLASS PLAY
MAY	1-3-	STATE MUSIC CONTEST-SIOUX CITY
	8---	BASEBALL-MONETA (THERE)
	9---	COUNTY MUSIC FESTIVAL-PRIMGHAR
	10---	JUNIOR-SENIOR BANQUET
	13---	BASEBALL-CALUMET (HERE)
	16---	BASEBALL-SIBLEY (THERE)
	18---	BACCALAUREATE
	22---	COMMENCEMENT
	23---	BASEBALL-PAULLINA (THERE)



TOP ROW: MAMMEN, HUGHES, TRIPLETT, NELSON, LENHARDT, ENGELKE, GILLESPIE, OLHAUSEN, BRANSTETTER, DOODY, JOHANNSEN; BOTTOM ROW: THARP, GINGER, DUNCAN, WIESE, CHESLEY, CROSSER, MARTIN, POWELL, ANDERS, JALAS.

JUNIORS

THE JUNIORS HAVE WEATHERED THE ASSIGNMENTS AND TEXTBOOKS, SO FAR. THE CLASS OFFICERS ARE AS FOLLOWS: PRESIDENT, ROSE BRANSTETTER, VICE-PRESIDENT, MARGARET ANN CHESLEY, SECRETARY-TREASURER, CHARLOTTE DOODY.

THIS CLASS, TWENTY STRONG AND A JOLLY BUNCH, ARE WELL REPRESENTED IN THE SCHOOL ACTIVITIES, SIX PUPILS BEING IN THE BAND, FOUR IN BOYS' GLEE CLUB, FOUR IN GIRLS' GLEE CLUB, SIX IN MIXED CHORUS, TWO PARTICIPATING IN FOOTBALL, AND TWO IN BASKETBALL.

AN ALL-HIGH-SCHOOL CHRISTMAS DANCE SPONSORED BY THE JUNIORS IS STILL THEIR PRIDE AND JOY. THE JUNIORS LOOK FORWARD TO MORE GOOD TIMES WITH THEIR SPONSOR, MISS MAMMEN.



TOP ROW: MISS AITKEN, WATSON, SWEENEY, NIELSEN, TRIPLETT, RA-
PER, GULLIFORD, JENSEN, ENGELKE, HAMBROCK; BOTTOM ROW: STRUVE,
GILLESPIE, COLLIER, HILL, McCORMACK, COLSHAN, SCHOENING, PEKEL-
DER, LONG, MARTIN.

SOPHOMORES

THE SOPHOMORES ARE ON THE SECOND STEP OF THAT FOUR-STEP STAIRWAY--HIGH SCHOOL. THIS YEAR THEY ELECTED LUVERNE NIELSEN AS THEIR PRESIDENT, VIRGIL GULLIFORD AS VICE-PRESIDENT, AND DELMA SCHOENING AS SECRETARY-TREASURER.

OF THE NINETEEN MEMBERS, THERE ARE SIX REPRESENTATIVES IN BAND, EIGHT IN MIXED CHORUS, AND TEN IN GLEE CLUBS. MANY OF THE BOYS ARE OUTSTANDING IN ATHLETICS. ONE GIRL IS ON THE S. H. S. "SPOTLIGHT" STAFF AND ANOTHER IS AN "S" CLUB MEMBER.

IN THE FALL OF 1940 THE SOPHOMORES INITIATED THE FRESHMEN AT AN ALL-HIGH-SCHOOL PARTY.

DURING THE SECOND SEMESTER MISS TUNTLAND WAS OUR CLASS SPONSOR.



TOP ROW: ADAMS, SHERIDEN, PETERS, REGINETTER, SIMPSON, DOLING, W. MARTIN, WEHR, HASH, BRECHWALD; SECOND ROW: MISS BEACHLER, B. MARTIN, LITKA, JENSEN, LOHBERGER, HILL, GINGER, POWELL, E. MOORE; THIRD ROW: ANDERS, V. SELK, WAGGONER, SIEFKIN, M. MOORE, M. HILL, MATZ, BECKMAN, H. SELK, KAS.

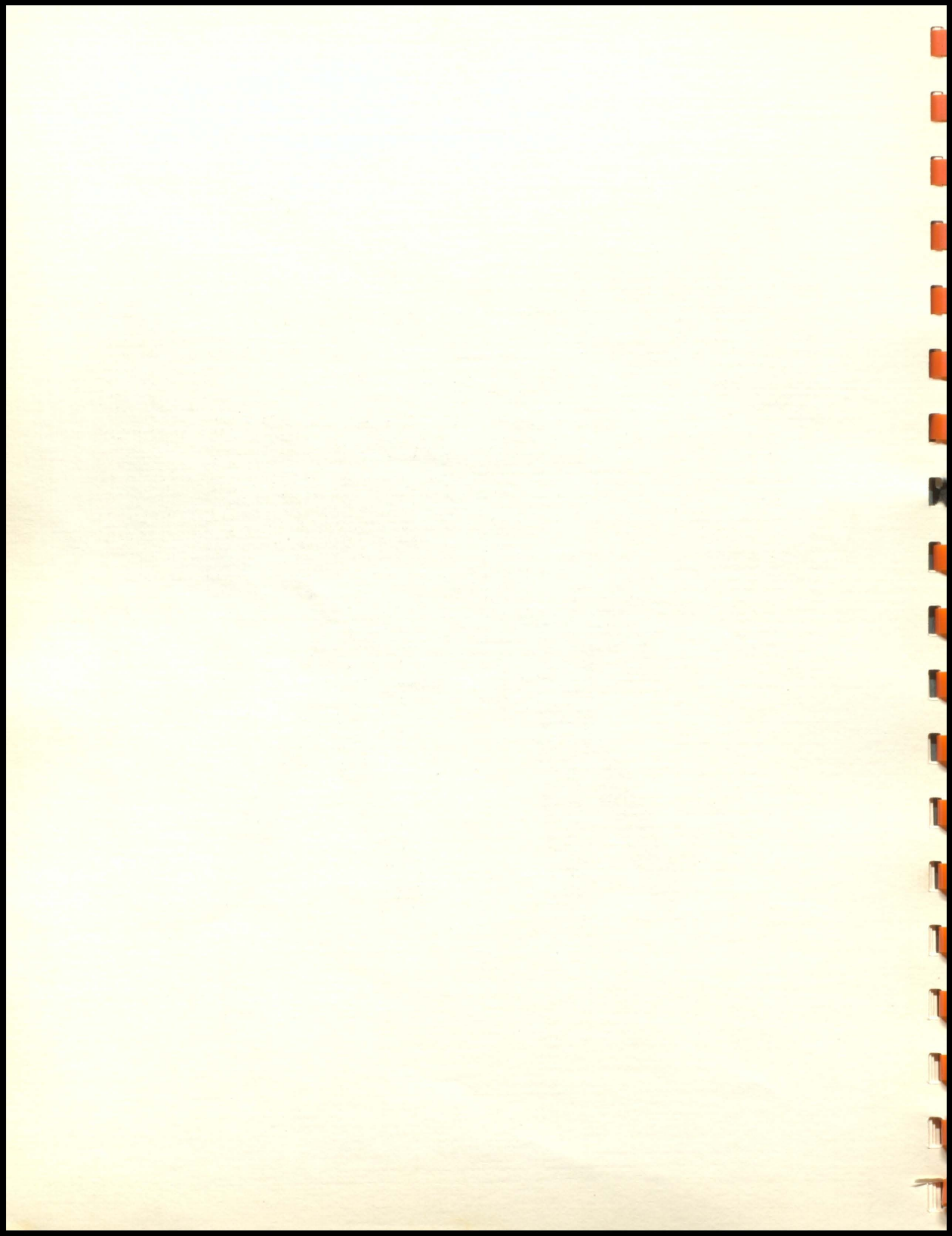
FRESHMEN

THE BRIGHTEST, ALTHOUGH NOT THE LARGEST FRESHMEN CLASS, HAS ENTERED SUTHERLAND HIGH SCHOOL. IT IS THE ONE AND ONLY CLASS OF 1944.

THERE ARE THIRTY-ONE IN THIS CLASS WHICH CONSISTS OF FIFTEEN GIRLS AND SIXTEEN BOYS. THEIR CLASS SPONSOR IS MISS BEACHLER. THE PRESIDENT OF THE CLASS IS LESLIE HILL, THE VICE-PRESIDENT IS BURDETTE WAGGONER, AND THE SECRETARY-TREASURER IS RUTH HASH.

ELEVEN MEMBERS OF THE CLASS ARE IN BAND. TWO BOYS AND TWO GIRLS ARE IN EACH OF THE GLEE CLUBS. TWO FRESHMEN ARE IN MIXED CHORUS. MARY ELLEN JENSEN IS OUR OUTSTANDING MUSICAL STUDENT.







TOP ROW: B. WAGGONER, NIELSEN, HAYES, JENNER, CULP, B. GILLESPIE, HILL, A. JENSEN, HASH; SECOND ROW: COACH MAAS, HUGHES, R. WAGGONER, BRECHWALD, W. WAGGONER, P. JENSEN, SWEENEY, REGINETTER, R. GILLESPIE, D. WAGGONER.

FOOTBALL

PROSPECTS WERE BRIGHT THIS YEAR ALTHOUGH ONLY SEVENTEEN BOYS REPORTED FOR PRACTICE. THEY WERE ED BRECHWALD, DONALD HASH, WILBUR WAGGONER, BOB WAGGONER, DAROLD CULP, BOB JENNER, HARLAN HUGHES, PAUL SWEENEY, LUVERNE NIELSEN, RONNIE GILLESPIE, PAUL JENSEN, LESLIE HILL, BURDETTE WAGGONER, AND BOB REGINETTER. OF THESE THERE WERE EIGHT LETTERMEN; ED BRECHWALD, DONALD HASH, WILBUR WAGGONER, BOB WAGGONER, DAROLD CULP, BOB JENNER, ELMORE HAYES, AND BILL GILLESPIE.

AT THE ANNUAL SIOUX VALLEY CONFERENCE JAMBOREE THE TEAM GAVE A WEAK SHOWING IN THE ONE QUARTER AGAINST POWERFUL AURELIA.



THE FOLLOWING WEEK THE TIGERS STARTED AN EIGHT GAME SCHEDULE BY TROUNCING PETERSON 28-0. THE SQUAD SHOWED A COMPLETE REVERSAL OF FORM OF THE PREVIOUS WEEK.

THE TIGERS' NEXT GAME AT CLEGHORN PROVED TO BE A THRILLER. SUTHERLAND LED 12-0 AT THE FIRST OF THE FOURTH QUARTER. THEN CLEGHORN STARTED CONNECTING WITH PASSES. THE ORANGE AND BLACK HAD A GOOD SCARE BUT CAME OUT ON TOP 12-6.

SANBORN'S LARGER BUT LISTLESS TEAM WAS SENT HOME BEATEN 46-0. THE LINE SHOWED REMARKABLE POWER AND THE BACKS, LED BY BOB WAGGONER WHO WAS THE MAIN COG IN THE OFFENSE WITH FOUR TOUCHDOWNS, GAVE A SHOWING OF SPEED AND SHIFTINESS.

THE HOMECOMING GAME WITH HARTLEY ENDED IN A 0-0 TIE. THE PLAY WAS ABOUT EVEN AND EACH TEAM WAS IN SCORING TERRITORY ONCE.

AT PRIMGHAR'S HOMECOMING THE TIGERS DIDN'T GET WARMED UP UNTIL THE SECOND HALF WHEN THEY SCORED TWICE FOR 13-0 WIN. THE OUTSTANDING FEATURE WAS ED BRECHWALD'S PUNT RETURN FOR SUTHERLAND'S SECOND TOUCHDOWN.

ANOTHER EASY GAME WAS THE ALTA TUSSLE. AGAIN SUTHERLAND WAS OUTWEIGHED BUT HAD THE FIGHT AND DETERMINATION TO WIN. THEY LED 27-0 AT THE END OF THE FIRST HALF AND FINISHED THE GAME WITH A 55-0 WIN TO CONTINUE UNBEATEN.

THE NEXT GAME WAS THE OLD GRUDGE BATTLE WITH PAULLINA. THE BLUE AND WHITE HADN'T BEATEN THE TIGERS IN SEVENTEEN YEARS, HADN'T SCORED IN SEVEN YEARS AND FAILED TO SCORE AGAIN. THE CONQUERING TIGERS WON 19-0. BOB WAGGONER SCORED TWO TOUCHDOWNS FOR SUTHERLAND.

THE SCHEDULED ARMISTICE DAY GAME WITH SIOUX RAPIDS HAD TO BE CALLED OFF BECAUSE OF THE SNOW STORM AND THIS LEFT SUTHERLAND UNBEATEN WITH 6 WINS AND 1 TIE. THE TIGERS SCORED 170 POINTS TO THEIR OPPONENTS 6. THE LINE WAS NOT SCORED THROUGH, THE ONLY TOUCHDOWN BEING SCORED ON A PASS.

SUTHERLAND WAS WELL REPRESENTED ON THE ALL-CONFERENCE TEAM WITH PAUL SWEENEY, BOB WAGGONER AND BILL GILLESPIE ON THE FIRST SELECTION. THE REST OF THE TEAM WAS ON THE SECOND TEAM OR RECEIVED HONORABLE MENTION.

DUE TO AN INFRACTION OF RULES AURELIA, WHO WOULD HAVE BEEN CHAMPION, HAD TO FORFEIT TWO GAMES AND THIS MADE THE SUTHERLAND TIGERS SIOUX VALLEY CONFERENCE FOOTBALL CHAMPIONS OF 1940.

THE SQUAD ELECTED WILBUR WAGGONER AND EDWARD BRECHWALD AS CO-CAPTAINS AND BOB WAGGONER WAS CHOSEN MOST VALUABLE PLAYER.



THERE WERE TWELVE LETTERS GIVEN, THESE BEING AS FOLLOWS: TO SENIORS; BOB WAGGONER, BOB JENNER, WILBUR WAGGONER, EDWARD BRECHWALD, DONALD HASH, DAROLD CULP, ALFRED JENSEN, AND ELMORE HAYES; TO JUNIORS; BILL GILLESPIE AND HARLAN HUGHES; TO SOPHOMORES; PAUL SWEENEY AND LUVERNE NIELSEN.

BASKETBALL

PETERSON CAME TO SUTHERLAND FOR THE FIRST GAME OF THE SEASON. THE TIGERS LOST 23-15.

SUTHERLAND WAS HOST TO CALUMET IN THEIR SECOND GAME. WITH CAPTAIN "SCOTCH" WAGGONER MAKING 21 POINTS THE LOCALS WON 34-22.

IN THEIR FIRST CONFERENCE GAME SUTHERLAND LOST TO CLEGHORN 36-24. "SCOTCH" WAGGONER MAKING 15 POINTS WAS HIGH-POINT MAN.

THE TIGERS JOURNEYED TO MERIDEN IN THEIR LAST GAME BEFORE THE HOLIDAYS. BOB WAGGONER'S 24 POINTS SPARKED THE TIGERS TO AN OVERWHELMING 49-27 WIN.

"SCOTCH" AGAIN POURED IN 24 POINTS AS THE ORANGE AND BLACK LICKED THEIR OLD RIVALS, PAULLINA, 46-35.

THE TALL ALTA CYCLONES DOWNED THE GAME TIGERS 38-35 IN A CLOSE GAME. CULP SCORED 16 POINTS AND WAGGONER 13 FOR SUTHERLAND.

IN THE SIOUX VALLEY CONFERENCE TOURNAMENT, SUTHERLAND LOST TO SIOUX RAPIDS 35-24 IN THE FIRST ROUND.

SIOUX RAPIDS, WHO WON THE TOURNAMENT, AGAIN DEFEATED SUTHERLAND. THE TIGERS WERE HANDICAPPED AS WAGGONER WAS ON THE BENCH WITH A SPRAINED ANKLE.

IN A ROUGH GAME HARTLEY CAME CLOSE TO WINNING FROM SUTHERLAND, "SCOTCH" SCORED 19 POINTS IN THE 22-21 WIN.

SANBORN'S BULLDOGS WON FROM THE TIGERS 34-26. SUTHERLAND WAS NO MATCH FOR SANBORN'S HEIGHT.

IN THE O'BRIEN COUNTY TOURNAMENT, SUTHERLAND BEAT PAULLINA 29-21 IN THE FIRST ROUND AS BOB WAGGONER POURED IN 19 POINTS. GAZA'S DEFENDING CHAMPIONS STOPPED SUTHERLAND 29-23 IN THE NEXT GAME. IN THE CONSOLATION GAME SUTHERLAND WON A THRILLER FROM SHELDON 30-29. "SCOTCH" BROUGHT HIS SCORING TOTAL IN THE TOURNAMENT TO 53 POINTS AND WAS SELECTED AS ALL-COUNTY FORWARD FOR THE THIRD YEAR IN SUCCESSION.



B
A
S
K
E
T
B
A
L
L



TOP ROW: D. WAGGONER, ANDERS, HASH, HILL, JENSEN, B. WAGGONER, COACH MAAS; BOTTOM ROW: B. WAGGONER, BRECHWALD, CULP, NIELSEN, W. WAGGONER.

B
A
S
E
B
A
L
L



TOP ROW: MR. BAIRD, R. WAGGONER, GILLESPIE, R. NIELSEN, ROWHER, AMENDT, W. WAGGONER, MR. MAAS; BOTTOM ROW: H. HAKEMAN, HASH, D. WAGGONER, W. HAKEMAN, JOINES, D. OLHAUSEN.



AURELIA, UNDEFEATED IN CONFERENCE PLAY, STOPPED THE TIGERS 26-20. AURELIA WAS CHEROKEE COUNTY CHAMPION.

PRIMHAR, LED BY THE HUGHES BROTHERS, TURNED BACK SUTHERLAND. THE TIGERS LOST AN EARLY LEAD AND WENT DOWN 30-21.

BILL GILLESPIE'S LAST MINUTE FIELD GOAL GAVE SUTHERLAND A 34-33 VICTORY OVER PAULLINA. THIS WAS THE THIRD TIME THE TIGERS HAD BEATEN THE BLUE AND WHITE PAULLINA FIVE.

IN THE FINAL GAME OF THE SEASON SUTHERLAND DROPPED A THRILLER TO EVERLY 33-30. THE TIGERS PLAYED GOOD BALL UNTIL CULP, WAGGONER, AND NIELSEN WENT OUT ON FOULS.

SUTHERLAND ADVANCED TO THE FINALS IN THE SECTIONAL TOURNAMENT BY DEFEATING HARTLEY 29-23 AND MARCUS 31-23. IN THE FINAL GAME, HOWEVER, PRIMGHAR STOPPED THE LOCALS 23-22.

IN CONFERENCE PLAY THE TIGERS WON TWO GAMES AND LOST FIVE. FOR THE WHOLE SEASON THEY WON NINE GAMES AND LOST ELEVEN. THE TEAM SCORED 560 POINTS WHILE THEIR OPPONENTS SCORED 575 POINTS. THEY WON THIRD PLACE IN THE COUNTY TOURNAMENT AND WENT TO THE FINALS IN THE SECTIONAL TOURNAMENT.

BOB WAGGONER WAS ELECTED CAPTAIN AND SEVEN LETTERS WERE GIVEN. THE SENIOR WINNERS WERE BOB WAGGONER, WILBUR WAGGONER, ALFRED JENSEN, EDWARD BRECHWALD, DAROLD CULP, AND DONALD HASH. THE SOPHOMORE WINNER WAS LUVERNE NIELSEN.

BASEBALL

LAST SPRING'S BASEBALL TEAM CAME THROUGH WITH SEVEN WINS AND FIVE LOSSES. THE BEST GAME OF THE SEASON WAS THE CLOSING TILT WITH PAULLINA. LORNE JOINES' GOOD PITCHING AND WILBUR WAGGONER'S TIMELY HIT WITH THE BASES LOADED IN THE SIXTH INNING WON FOR SUTHERLAND 2-1. LETTERMEN WERE: WAYNE HAKEMAN, HAROLD HAKEMAN, LORNE JOINES, DONALD WAGGONER, AND MARVIN AMENDT--SENIORS--BOB WAGGONER, DONALD OLHAUSEN, WILBUR WAGGONER, AND DONALD HASH--JUNIORS--AND BILL GILLESPIE--SOPHOMORE. HAROLD HAKEMAN WAS ELECTED CAPTAIN.

THIS YEAR'S TEAM WILL BE FAIRLY STRONG IN ALL DEPARTMENTS, EXCEPT PITCHING. THERE ARE FIVE LETTERMEN RETURNING AND RESERVES THAT DIDN'T QUITE MAKE A LETTER TO FILL OTHER POSITIONS.



BOYS' "S" CLUB

THE BOYS' "S" CLUB IS MADE UP OF LETTER WINNERS WHO ARE INITIATED INTO THE CLUB. THE INITIATION CONSISTS OF A WEEK OF DEVOTED SERVICE TO THE ACTIVES. THERE ARE FIFTEEN ACTIVES. THEY ARE DELMAR WAGGONER, BOB WAGGONER, WILBUR WAGGONER, EDWARD BRECHWALD, BOB JENNER, DONALD OLHAUSEN, DONALD HASH, BOB NIELSEN, ALFRED JENSEN, DAROLD CULP, ELMORE HAYES, BILL GILLESPIE, HARLAN HUGHES, PAUL SWEENEY, AND LUYERNE NIELSEN. THE OFFICERS ARE AS FOLLOWS: DELMAR WAGGONER, PRESIDENT, EDWARD BRECHWALD, VICE-PRESIDENT, WILBUR WAGGONER, SECRETARY-TREASURER.

COACH MAAS IS THE SPONSOR OF THE GROUP. THE CLUB HAS SEVERAL PARTIES AND DANCES EVERY YEAR.

GIRLS' "S" CLUB

AFTER THE INITIATION OF FIVE GIRLS--ROSE BRANSTETTER, JUNE WIESE, CHARLOTTE DOODY, ALICE PEKELDER, AND ELDREDA MARTIN--THE GIRLS' "S" CLUB CONSISTED OF THIRTEEN MEMBERS.

BEING ELIGIBLE FOR MEMBERSHIP IN THE CLUB CALLS FOR FAIRNESS, FRIENDLINESS, COURTESY, SPORTSMANSHIP, AND SCHOOL SPIRIT. THESE QUALITIES OF COOPERATING WITH ONE ANOTHER WILL HELP IN RECEIVING THE 500 POINTS ONE MUST HAVE BEFORE AN "S" IS AWARDED. THESE POINTS MAY BE OBTAINED BY TAKING PART IN ALL SPORTS. FOUR POINTS ARE GIVEN FOR EACH HOUR. ALL G. A. A. GIRLS WHO HAVE RECEIVED AN "S" MAY BE A MEMBER OF THE "S" CLUB.

THIS ORGANIZATION HOLDS FUN IN STORE FOR EVERYONE WHO IS WILLING TO COMBINE THEIR INTEREST AND ENTHUSIASM. THE GIRLS OF THIS CLUB OFTEN ENTERTAIN MEMBERS OF THE BOYS' "S" CLUB, HAVE PICNICS AND PARTIES, AND ARE WAITRESSES FOR THE ANNUAL FOOTBALL BANQUET.

OFFICERS OF THE GROUP ARE AS FOLLOWS: PRESIDENT, ROSE BRANSTETTER, VICE-PRESIDENT, JUNE WIESE, SECRETARY, CHARLOTTE DOODY, TREASURER, ALICE PEKELDER. MISS BEACHLER IS THE SPONSOR.

G. A. A.

EACH SEASON BRINGS A NEW GROUP OF ACTIVITIES SUITABLE FOR THAT TIME OF YEAR--OUTDOORS IN THE SPRING AND FALL, AND INDOORS IN THE WINTER. THE SEASONAL BRANCHES INCLUDE NOT ONLY HOCKEY, BASKETBALL, HIKING, VOLLEY-BALL, PING-PONG, BADMINTON, TENNIS,



AND BASEBALL BUT ALSO A GREAT VARIETY OF PLAY DAYS, PARTIES, CLASS TOURNAMENTS, AND OUTINGS TO ATTRACT THE SUTHERLAND GIRLS THIS YEAR. THESE SPORTS HAVE HELPED IN ESTABLISHING THE G. A. A. AND IN MAKING IT ONE OF THE MOST OUTSTANDING ORGANIZATIONS IN THE SCHOOL.

THE GROUP FUNCTIONS AS A UNIT. THEY PLAN THEIR OWN PROGRAMS AND ELECT THEIR OFFICERS AND LEADERS. THE PRESIDENT OF THE CLUB AND THE EXECUTIVE OFFICERS OF THE GIRLS' ATHLETIC ASSOCIATION FORM THE GOVERNING BOARD. THE OFFICERS ARE AS FOLLOWS: PRESIDENT, DOROTHY MARTIN, VICE-PRESIDENT, MAXINE LYNN, SECRETARY, VERNA MAE MATZ, TREASURER, KATHERINE THIESSEN. THE LEADERS OF THE GROUP FOR THE YEAR WERE DORIS WAGONER, PEGGY NELSON, VERNA MAE MATZ, AND ELDREDA MARTIN. MISS BEACHLER WAS THE G. A. A. SPONSOR.

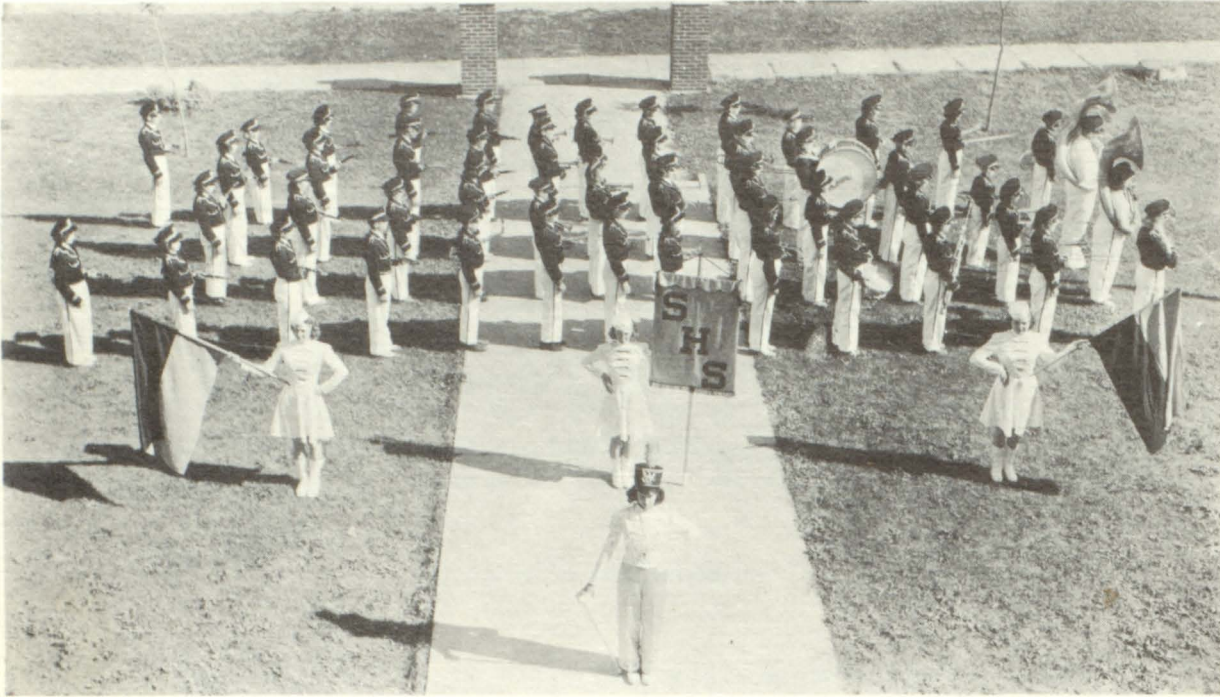
CHRISTMAS PROGRAM

THE CHRISTMAS PROGRAM, PRESENTED BY THE VOCAL AND INSTRUMENTAL GROUPS, WAS AN OUTSTANDING PERFORMANCE OF THIS SCHOOL YEAR.

AT THE BEGINNING OF THE PROGRAM ANTIPHONAL SINGING OF CHRISTMAS CAROLS WAS HEARD FROM VARIOUS HALLS OF THE BUILDING. THE CAROLERS WERE MEMBERS OF THE GIRLS' AND BOYS' GLEE CLUBS. FOLLOWING AN INTRODUCTION OF VOCAL AND INSTRUMENTAL NUMBERS, THE PROCESSIONAL OF THE CANTATA BEGAN. THE GIRLS' GLEE CLUB WAS ATTIRED IN MAROON ROBES, AND EACH GIRL WAS CARRYING A LIGHTED CANDLE AS SHE MARCHED IN SINGING, "O COME ALL YE FAITHFUL." THE REED QUINTET PLAYED THE ACCOMPANIMENT.

THE ASSEMBLY WAS DARK EXCEPT FOR THE LIGHTED CANDLES ALONG THE WINDOWS. AFTER THE GIRLS WERE SEATED, THE CHRISTMAS STORY WAS READ BY MRS. MARGARET MANN WHILE THE GIRLS SOFTLY HUMMED "SILENT NIGHT." IN SEVERAL OF THE CANTATA NUMBERS THERE WERE SOLO PARTS WITH THE FOLLOWING GIRLS AS SOLOISTS: CATHERINE SWEENEY, RUTH ELLEN JONES, MAXINE LYNN, EVELYN HOFFMAN, MYRNE INNES, AND BARBARA JONES. THE WHOLE CANTATA WAS CENTERED AROUND THE CHRISTMAS STORY. AFTER THE CANTATA SEVERAL VOCAL AND INSTRUMENTAL NUMBERS WERE PRESENTED. FOR THE RECESSIONAL THE GIRLS SANG "JOY TO THE WORLD."

THIS PROGRAM WILL LONG BE REMEMBERED FOR THE IMPRESSIVE MANNER IN WHICH IT PORTRAYED THE CHRISTMAS SPIRIT. MISS MABEL KRUSE AND MR. CARL SAGNESS DIRECTED THE PROGRAM. MISS ELSIE CUNNINGHAM WAS THE ACCOMPANIST.



THE BAND

OUR SCHOOL IS PROUD OF ITS BAND WHICH IS UNDER THE PERSONAL DIRECTION OF MR. CARL E. SAGNESS. IN ADDITION TO HIS WORK WITH THE REGULAR BAND, MR. SAGNESS IS BUSY WITH NUMEROUS REHEARSALS FOR THE APPEARANCE OF INDIVIDUAL PERFORMERS, ASSEMBLY PROGRAMS, CONCERTS AND SPECIAL REQUESTS. AS A PEP BAND, IT HAS ADDED TO THE SPIRIT AND ZEST OF MANY ATHLETIC EVENTS.

MANY OF THE STUDENTS ARE EFFICIENTLY VERSED IN THE VARIOUS KINDS OF MUSIC, AND THEY HAVE BEEN WORKING ON SOLOS FOR CONTEST.





FOR THE FOUR YEARS THAT THE BAND HAS ENTERED THE CONTEST, IT HAS SHOWN UNUSUAL SKILL IN COMPETING WITH LIKE BANDS OF CLASS C. LAST YEAR EACH MEMBER OF THE BAND RECEIVED A GOLD MEDAL FOR THEIR SUPERIORITY IN THE STATE FINALS.

THE MEMBERS OF THE BAND ARE ATTIRED IN MAROON JACKETS WITH GOLD TRIMMING AND WHITE TROUSERS WITH MAROON STRIPES. SOME STUDENTS OF THE GROUP ARE AWARDED GOLD CITATION CORDS, TO BE WORN ON THEIR LEFT SHOULDER, FOR THEIR OUTSTANDING WORK IN THE BAND.

CLARINETS

DOROTHY MARTIN
BARBARA JONES
DONALD HASH
EILEEN MOORE
PHYLLIS TRIPLETT
JEAN JENNER
MYRNE INNES
ARLENE MATZ
BETTY LOU MANGELS
DONNA WAGGONER
CHARLOTTE DOODY
HARRIET HILL
VERLA SCHOENING
IRENE NELSON
VIRGINIA BROWN
DOROTHY WARREN
HOWARD HOCKERT

DRUMS

LOIS WOOLSTON
FRANCIS POWELL
DEAN SIMPSON
HARRY JALAS

CORNETS

PHIL HOFFMAN
WILBUR MARTIN
LESTER MARTIN
MURIEL MOORE
WINIFRED JONES
ARLENE WATSON
JOYCE WAGGONER
MARGARET POWELL
CLAIR TRIPLETT
KENNETH LEMKE
LEE BRYANT
ALICE DUNCAN
MARJORIE HILL
CLARENCE SHERIDEN
CHARLES RAPER

FLUTES

RUTH ELLEN JONES
BETTY WILLEY

FRENCH HORNS

EDWARD BRECHWALD
HARLAN HUGHES
ELVIN THARP

PICCOLO

SHIRLEY YONT

BASSOON

DELMA SCHOENING

SAXAPHONES

EVELYN HOFFMAN
RICHARD LONG

OBOE

MARY ELLEN JENSEN

TROMBONES

ALFRED JENSEN
ALICE PEKELDER
LEONA COLLIER
THOMAS DOLING

BARITONES

DORIS WAGGONER
BERNARD KAS

SOUSAPHONES HARRISON FISCH, CATHERINE SWEENEY

WOODWIND QUINTET

THE WOODWIND FIVESOME COMPOSED OF DOROTHY MARTIN, CLARINET, RUTH ELLEN JONES, FLUTE, MARY ELLEN JENSEN, OBOE, DELMA SCHOENING, BASSOON, HARLAN HUGHES, FRENCH HORN, HAS BEEN AN OUTSTANDING GROUP IN THE MUSICAL ACTIVITIES OF SUTHERLAND. THE QUINTET PRESENTING CLASSICAL, WOODWIND SELECTIONS HAD A VERY ACTIVE PART IN THE CHRISTMAS CANTATA.



MARCHING BAND

THE MARCHING BAND COMPOSED OF APPROXIMATELY FIFTY MEMBERS IS AN IMPORTANT MUSICAL ACTIVITY OF SUTHERLAND.

UNDER THE DIRECTION OF MR. SAGNESS THE BAND PLAYS AT ALL FOOTBALL GAMES AND LEADS THE HOMECOMING PARADE. LEADING THE PARADE IS EVELYN HOFFMAN, THE DRUM MAJORETTE, WHO IS ATTIRED IN GOLD SATIN SLACKS AND A WHITE SATIN, MILITARY, GOLD-TRIMMED BLOUSE WHICH IS SET OFF BY HER BRIGHTLY SHINING METAL HAT ADORNED WITH A FEATHER POM-POM. THE BANNER GIRLS--LOIS WOOLSTON, EDITH JOHANNSEN, AND CHARLIENE OLHAUSEN--FOLLOW THE DRUM MAJOR AND THEIR UNIFORMS CONSIST OF WHITE SATIN SKIRTS WITH MATCHING MILITARY BLOUSES. THEY ALSO HAVE LITTLE PILL-BOX HATS AND HIGH BOOTS. ALTOGETHER THEY MAKE A VERY ATTRACTIVE GROUP.

BRASS SEXTET

THE SEXTET HAS DONE FINE WORK THIS YEAR. THEY HAVE APPEARED IN CONCERTS, PROGRAMS, AND ENTERED THE CONTEST. IT HAS BEEN A SUCCESSFUL INSTRUMENTAL GROUP; IT HAS PROVED ITS SUCCESS THROUGH INTERPRETATION, TONE, AND QUALITY OF THEIR MUSIC.

THE BRASS SEXTET HAS, FOR THE PAST FEW YEARS, ENTERED FOR CONTEST COMPETITION. MENTION WAS BROUGHT TO THE SEXTET OF 1940 NOT ONLY BY THEIR FINE SELECTION OF PIECES BUT ALSO BY THEIR SKILL IN DELIVERING THEM.

MEMBERS OF THE GROUP THIS YEAR ARE DORIS WAGGONER, BARITONE, ALFRED JENSEN, TROMBONE, HARRISON FISCH, SOUSAPHONE, PHIL HOFFMAN, FIRST CORNET, WILBUR MARTIN, SECOND CORNET, AND EDWARD BRECHWALD, FRENCH HORN.

WOODWIND TRIO

DOROTHY MARTIN, CLARINET, MARY ELLEN JENSEN, OBOE, AND RUTH ELLEN JONES, FLUTE, MAKE UP THE NEW WOODWIND TRIO OF THIS YEAR. BESIDES APPEARING ON OTHER PROGRAMS THIS TRIO WILL ENTER THE CONTEST. UNDER THE DIRECTION OF MR. SAGNESS THIS TALENTED GROUP RENDERS FINE MUSIC.

SINCE IT IS A COMPARATIVELY NEW GROUP, WE WISH TO ACKNOWLEDGE ITS CONTRIBUTION TO OUR MUSICAL ENSEMBLES.



MIXED CHORUS

THE MIXED CHORUS IS COMPOSED OF THIRTY-THREE MEMBERS FROM THE GIRLS' AND BOYS' GLEE CLUBS. THIS GROUP SINGS AT ASSEMBLY PROGRAMS, AND EACH YEAR IT ENTERS THE CONTEST. IN THE PAST FEW YEARS THE MIXED CHORUS HAS RECEIVED WORTHY RECOGNITION AT THE ANNUAL CONTEST, AND LAST YEAR IT RECEIVED AN EXCELLENT RATING.

MISS KRUSE IS TO BE COMMENDED FOR HER FINE DIRECTION OF THIS GROUP. MISS CUNNINGHAM ACCOMPANIED AS PIANIST.

GIRLS' SEXTET

THE ABILITIES OF CATHERINE SWEENEY AND RUTH ELLEN JONES, FIRST SOPRANOS, MYRNE INNES AND CHARLIENE OLHAUSEN, SECOND SOPRANOS, EVELYN HOFFMAN AND BARBARA JONES, ALTOS, ARE COMBINED TO MAKE THE GIRLS' SEXTET ONE OF THE MOST INTERPRETIVE MUSICAL GROUPS IN SCHOOL.

THE GROUP HAS EARNED FOR ITSELF A FINE REPUTATION IN THE VOCAL FIELD AND DESERVES RECOGNITION.

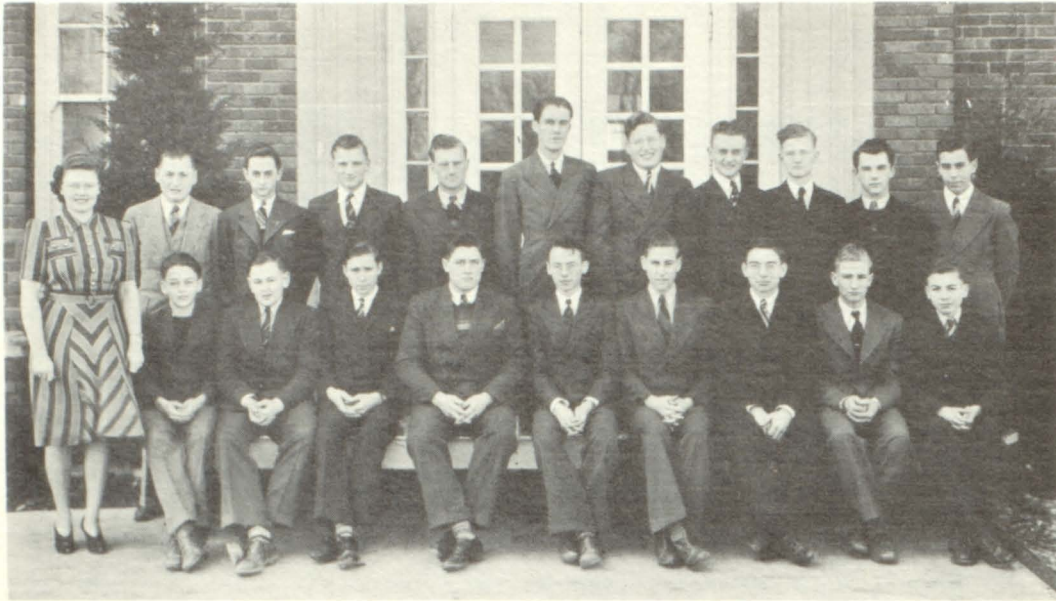
GIRLS' TRIO

THIS YEAR A NEW MUSICAL GROUP, A THREESOME, WAS ADDED TO THE SCHOOL'S MUSICAL ACTIVITIES. THE MEMBERS OF THIS TRIO ARE CHARLIENE OLHAUSEN, FIRST SOPRANO, MARY ELLEN JENSEN, SECOND SOPRANO, AND BARBARA JONES, ALTO.

MADRIGAL GROUP

FROM THE ANCIENT CUSTOM OF INFORMAL SINGING IS DERIVED THE MADRIGAL GROUP. THE MEMBERS HARMONIZE ON LOVELY CLASSICAL SONGS.

THE PARTICIPANTS ARE AS FOLLOWS: CHARLIENE OLHAUSEN, CATHERINE SWEENEY, RUTH ELLEN JONES, CLEONE LINDER, EVELYN HOFFMAN, MYRNE INNES, BARBARA JONES, MAXINE LYNN, DONALD HASH, DELMAR WAGGONER, HARRISON FISCH, ALFRED JENSEN, RICHARD LONG, PAUL SWEENEY, AND ELVIN THARP.



TOP ROW: MISS KRUSE, DOLING, GULLIFORD, L. NIELSEN, R. NIELSEN, BARRY, FISCH, HAYES, WAGGONER, BRECHWALD, JENSEN; BOTTOM ROW: LONG, MARTIN, JALAS, SWEENEY, HASH, OLHAUSEN, HUGHES, B. WAGGONER, THARP.



TOP ROW: MCCORMACK, OLHAUSEN, BRANSTETTER, LYNN, MISS KRUSE; SECOND ROW: PEKELDER, NELSON, P. NELSON, ENGELKE, MATZ, JENSEN, WATSON, CHESLEY; BOTTOM ROW: LINDER, SCHOENING, WOOLSTON, SWEENEY, JONES, INNES, JONES, HOFFMAN, CRANE, BRECHWALD.



BOYS' GLEE CLUB

TWENTY-ONE MEMBERS MAKE UP THE BOYS' GLEE CLUB. THIS CLUB SINGS FOR ASSEMBLY PROGRAMS AS WELL AS ENTERING CONTEST COMPETITION. AN EXCELLENT RATING WAS AWARDED TO THE GLEE CLUB LAST YEAR.

FOR THEIR PROGRAMS THE BOYS WEAR DARK SUITS AND LIGHT SHIRTS.

WITH THE FOUR PARTS--FIRST TENOR, SECOND TENOR, FIRST BASS, AND SECOND BASS--THE BOYS' GLEE CLUB PRODUCES SEMI-CLASSICAL MUSIC.

GIRLS' GLEE CLUB

THE GIRLS' GLEE CLUB IS A SELECTED VOCAL GROUP CONSISTING OF TWENTY-THREE MEMBERS. THEY HAVE PRESENTED MANY ASSEMBLY PROGRAMS AND WERE A MAIN FEATURE OF THE CHRISTMAS CANTATA. EVERY YEAR THIS GROUP COMPETES IN CONTEST WORK. LAST YEAR'S GLEE CLUB RECEIVED AN EXCELLENT RATING AT THE CONTEST. SEMI-CLASSICAL MUSIC IS USED WITH THE THREE PARTS--FIRST SOPRANO, SECOND SOPRANO, AND ALTO.

THE MEMBERS HAVE CHOSEN ROBES OF MAROON WITH WHITE COLLARS FOR THEIR PUBLIC APPEARANCES.

MISS MABEL KRUSE DID FINE WORK IN DIRECTING THE GIRLS, AND MISS ELSIE CUNNINGHAM ASSISTED HER AS PIANIST. THROUGH HARD WORK AND ABLE DIRECTION THE GIRLS' GLEE CLUB HAS BECOME KNOWN AS AN OUTSTANDING VOCAL GROUP OF SUTHERLAND.

GRADUATION ACTIVITIES

THE GRADUATION ACTIVITIES OF THE SENIORS ALWAYS PLAYS AN IMPORTANT PART IN THE SCHOOL PROGRAM.

THIS YEAR THE BACCALAUREATE SERVICE WILL BE HELD AT THE CHRISTIAN CHURCH ON SUNDAY, MAY 18, WITH REV. HOWE BRINGING THE MESSAGE.

DR. ROADMAN OF MORNINGSIDE COLLEGE WILL BE THE SPEAKER AT THE COMMENCEMENT EXERCISES, MAY 22.

CLASS DAY IS FRIDAY, MAY 23.



VOCATIONAL HOMEMAKING

THE HOMEMAKING CLASSES, MADE UP OF THE FRESHMEN AND SOPHOMORE GIRLS, HAVE ACCOMPLISHED A GREAT DEAL THIS YEAR. THEY HAVE A VARIETY OF AMBITIONS; EACH GIRL HAS A HOME PROJECT. THESE PROJECTS TEACH THE GIRLS NOT ONLY HOW TO DO VARIOUS THINGS, BUT ALSO HOW TO APPLY THE THINGS THEY HAVE LEARNED FROM THIS CLASS. LEARNING HOW TO SEW, SELECT AND BUY FOODS, PLAN HOUSES, WRAP PARCELS DIFFERENT WAYS, TEST FIBERS OF GOODS, GROOM, FORM CLEAN HABITS, DRAW, AND SELECT CLOTHING AS TO COLOR AND HARMONY WAS THE CHIEF WORK OF THE GROUP. A UNIT OF "MAKE IT YOURSELF", NAMELY, "THE RECONSTRUCTION OF CLOTHING" PROVED TO BE VERY INTERESTING TO THE CLASS.

VISUAL EDUCATION

A TOTAL OF FOURTEEN EDUCATIONAL FILMS WERE SHOWN TO S. H. S. STUDENTS THIS YEAR. THESE INCLUDED MANY ABOUT TRAVEL, SCIENCE, HISTORY, HOMEMAKING, SPORTS, AND TRAVELOGUES. THIS FEATURE IS A VERY IMPORTANT LINE OF OUR SCHOOL CURRICULUM.

"S. H. S. SPOTLIGHT"

THROUGH THE COURTESY OF THE "COURIER" THE SCHOOL'S NEWS IS PRINTED EACH WEEK. THIS INCLUDES GRADE AND HIGH SCHOOL NEWS AS WELL AS A "WE THREE" GOSSIP COLUMN.

THE "SPOTLIGHT" REPORTERS HAVE BEEN A VERY EFFICIENT STAFF, AND THE WEEKLY SCHOOL NEWS COVERAGE HAS BEEN APPRECIATED.

REPORTERS

VERNA MAE MATZ
PHYLLIS LENHART
BETTY JANE ENGELKE
ARLENE MATZ

LUCILLE CHESLEY
DEAN SIMPSON
RUTH BRANSTETTER
MARILYN FLINDERS

EDITORIAL STAFF

EDITOR-IN-CHIEF.....MYRNE INNES
FEATURE EDITORS.....EDNA WOODAL, CATHERINE SWEENEY
ELVIN THARP, AND MARGARET ANN CHESLEY.
MUSIC EDITOR.....EVELYN HOFFMAN
SPONSOR.....MISS TUNTLAND



TOP ROW: DONALD OLHAUSEN, ELMORE HAYES, HARRY HENDRICK, MISS TUNTLAND; BOTTOM ROW: CLEONE LINDER, MAXINE LYNN, DORIS WAGGONER, MYRNE INNES.

THE ANNUAL BOARD

THE EFFORTS OF THE ANNUAL STAFF HAVE BEEN JOINED IN THE PRODUCTION OF THE YEARLY "DUKE".

THIS ANNUAL IS FINANCED BY ADVERTISING AND SALES. THE SENIORS HAVE ALWAYS UNDERTAKEN TO CREATE THIS AS A LASTING REMEMBRANCE OF SCHOOL DAYS. COMBINING PICTURES AND MODERNISTIC DESIGNS THEY HAVE PRODUCED THIS ANNUAL YEARBOOK.

MAXINE LYNN.....	EDITOR
MYRNE INNES.....	ASSOCIATE-EDITOR
CLEONE LINDER.....	ACTIVITY EDITOR
ELMORE HAYES.....	SPORTS EDITOR
DORIS WAGGONER.....	ADVERTISING EDITOR
HARRY HENDRICK.....	BUSINESS MANAGER
DONALD OLHAUSEN.....	ASSISTANT MANAGER
ETHEL TUNTLAND.....	SPONSOR



JUNIOR CLASS PLAY

AN EVENING OF AMUSEMENT WAS CREATED WHEN THE CURTAIN ROSE ON THE FIRST ACT OF "PARENTS AND PIGTAILS". THE PLAY WAS A RIOT FROM THE BEGINNING TO THE END. THE POORLY CONDUCTED ROBINSON FAMILY WITH DIALOGUE, MOODINESS, HILARITY, AND SARCASM MANAGED TO PRODUCE PLENTY OF LAUGHTER.

THE AUTHOR, GEORGE SAVAGE, DISPLAYED HIS WIT IN SUCH A FASHION THAT ONE COULD HAVE APPLIED THE SITUATION TO REAL LIFE. THE LIVELY ELAINE, OFF ON A SKIING HOLIDAY, THE ENDLESS QUARRELS OF THE YOUNGER GENERATION, AND THE PLANNING OF VACATIONS BETWEEN THE MOTHER AND FATHER COMPLETED THE PLOT.

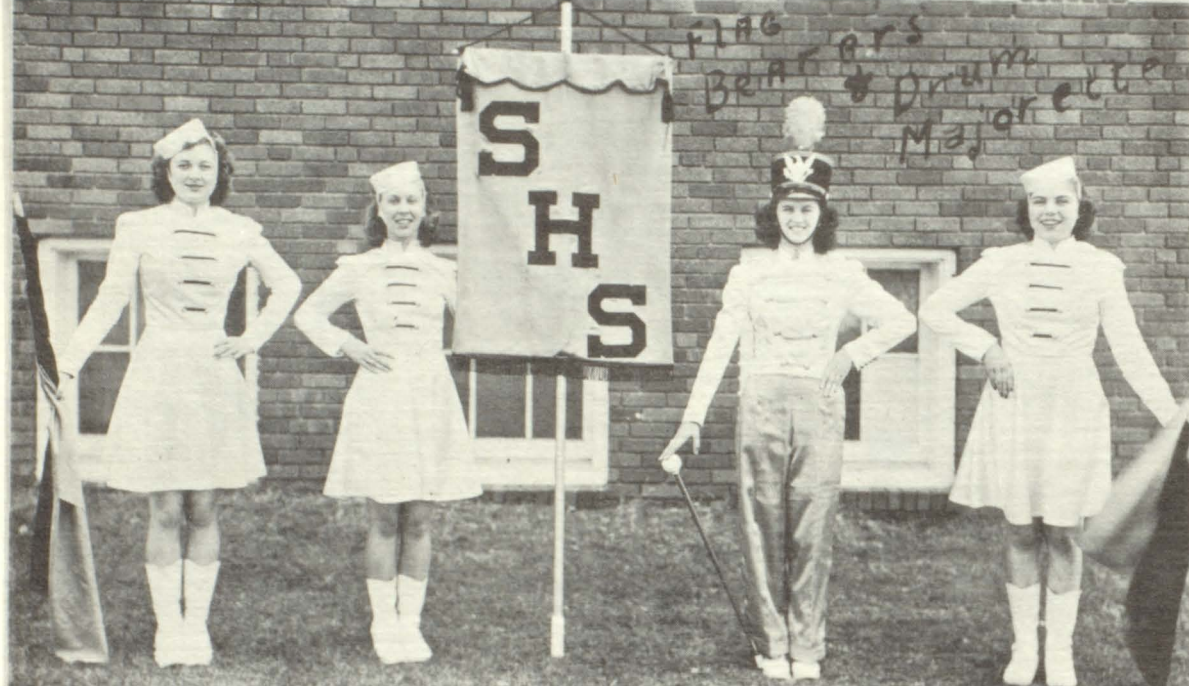
OUR SINCERE APPRECIATION GOES TO MISS BEACHLER, THE DIRECTOR, FOR A SPLENDID CHOICE OF PERFORMERS AND A FINE PRODUCTION.

DUDLEY ROBINSON.....	HARLAN HUGHES
MARGARET ROBINSON.....	MARGARET ANN CHESLEY
PAT.....	CHARLIENE OLHAUSEN
SANDRA.....	EDITH JOHANNSEN
ELAINE.....	JUNE WIESE
KEN BRISTOL.....	CHARLES TRIPLET
JOHN RICHARDS.....	BILL GILLESPIE
SAM DECKER.....	HARRISON FISCH
STELLA DUNN.....	ROSE BRANSTETTER
MRS. CARSON.....	ALICE DUNCAN
MRS. LEE.....	BECKY ANN ENGELKE
BETTE WALKER.....	MARJORIE GINGER
COKEY JOE.....	ELVIN THARP

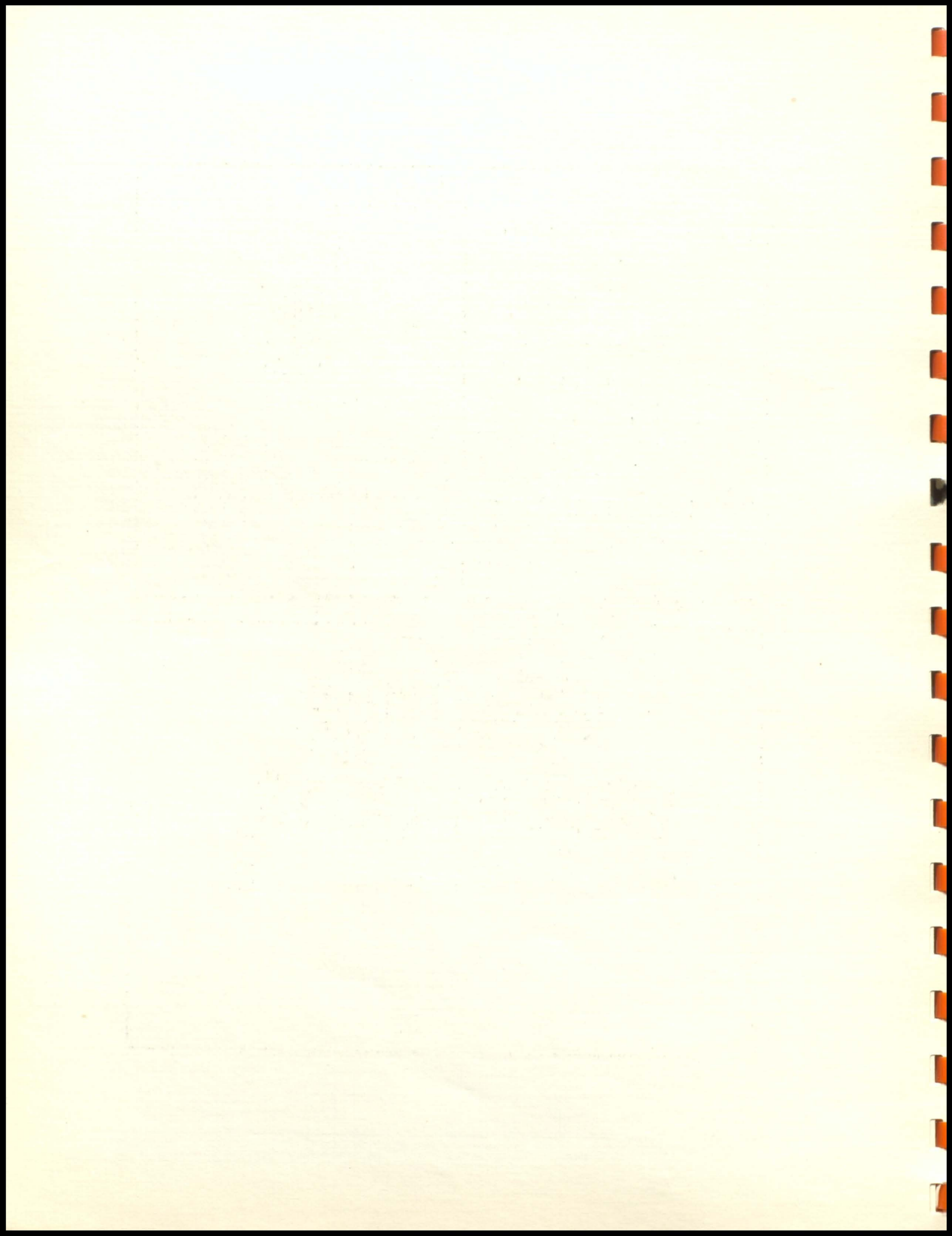
SENIOR CLASS PLAY

THE PLAY, "JUNE MAD", IS A SPARKLING COMEDY OF MODERN YOUTH WITH THE DELIGHTFUL, WHIMSICAL, AND PROFOUND ANALYSIS OF THE HEART OF A YOUNG GIRL. PRESENTED IN THIS PLAY ARE PROBLEMS, HUMOR, AND INSIGHT, COMMON TO ANY AMERICAN FAMILY. THE STORY CONCERNS PENNY WOOD AND CHUCK HARRIS, THE BOY NEXT DOOR, AS THEY GO ABOUT THEIR FREQUENTLY DIFFICULT BUT ALWAYS AMUSING BUSINESS OF GROWING UP. INTERFERENCES OF AN UNCLE MERWYN AND HIS FRIEND FROM COLLEGE UPSET PENNY IN HER ATTACKS OF LOVE, BUT INCIDENTALLY, SHE IS BROUGHT BACK TO NORMAL BY CHUCK.









Our Congratulations
To

THE STUDENTS OF
SUTHERLAND HIGH SCHOOL
AND MAY I E SUGGEST THAT
WHEN YOU ARE LOOKING
FOR A PLACE TO SPEND
AN EVENING, WE ARE
ALWAYS GLAD TO SEE YOU.

Time Theatre

PRIMGHAR

IOWA

Hillmer's Texaco
Service



GREASING

VACUUMING

WASHING

ACCESSORIES

HAVOLINE AND TEXACO
OILS
FIRE-CHIEF GASOLINE

SUTHERLAND

IOWA

ROADSIDE GREENHOUSE

EAST MAIN STREET

CHEROKEE, IOWA

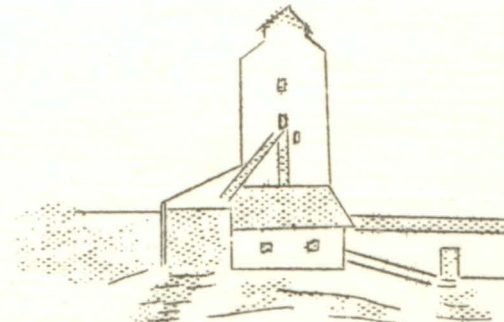
PHONE 205

FLOWERS FOR ALL OCCASIONS.

THE
Security State Bank

MEMBER
OF
DEPOSIT INSURANCE
CORPORATION.

SUTHERLAND
IOWA



SEED, FEED, SALT,
COAL, GRAIN,
GRINDING, AND
FEED MIXING

Sutherland Grain Co.

V. A. BRANSTETTER
PHONE 94

FOR QUALITY CHICKS
AT FAIR PRICES
SEE

Anderson Hatchery

NORTHWEST IOWA'S FINEST
HATCHERY

PRIMGHAR IOWA

DEAN'S SERVICE
STATION



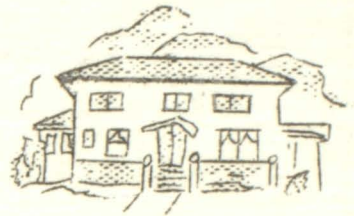
STANDARD OIL
PRODUCTS

ON HIGHWAY 10 PHONE 52
PAULLINA IOWA



Sutherland Cleaners

CLEANING PRESSING
TAILORING
SUTHERLAND PHONE 205



REISTE

FUNERAL HOME

AMBULANCE SERVICE
OFFICE PHONE 40
RESIDENCE PHONE 42
SUTHERLAND IOWA

PRINTING AND DESIGNING

GRADUATION
ANNOUNCEMENTS

PROGRAMS

FOLDERS

THE COURIER

SUTHERLAND

HARDWARE

HEATING - PLUMBING

SHOE & HARNESS

REPAIRING

CHAS. ALDRED

PHONE 15

Distinctive Photography

HARRISON DILLON
STUDIO

STORM LAKE

IOWA

CW CRANE

CHICKS * * * FEEDS

EQUIPMENT

REMEDIES

KOZY BROODER HOUSES



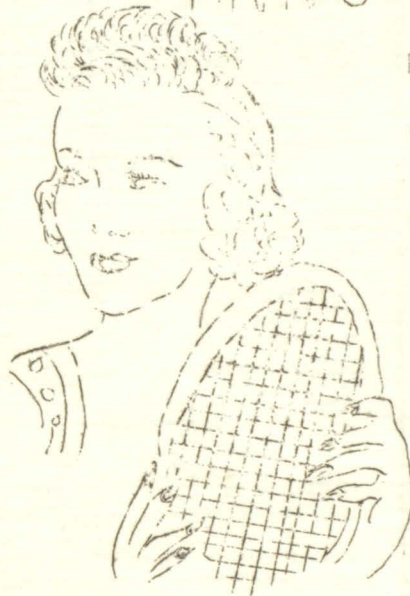
J. A. WAGNER M. D.

PRIMGHAR, IA.

PHONE

RES. 3 ON 145
OFFICE 2 ON 145

ANN'S BEAUTY SHOPPE



FOR PLAYTIME OR FORMAL OCCASIONS LET OUR EXPERIENCED OPERATORS DESIGN YOUR INDIVIDUAL HAIR-**DRESS**.


PERSONALITY MEANS SUCCESS. YOUR **MAKE-UP** SHOULD ACCENTUATE YOUR PERSONALITY.

BUY YOUR BEAUTY AIDS FROM A BEAUTICIAN

FOR APPOINTMENTS

PHONE 247

PAULLINA, IOWA



SUTHERLAND
IOWA

VAL'S

SPEND THAT IDLE HOUR
AT VAL'S
RECREATION PARLOR.

Sutherland Locker

YOU
CAN HAVE FRESH
VEGETABLES,
FRUITS AND MEATS
AT ANY SEASON OF
THE YEAR.

SEE
THE THIESSEN BROS.

PHONE 82
SUTHERLAND IOWA

T. D. KAS, M. D.

PHYSICIAN

AND
SURGEON

PHONE
RES. 170 OFFICE 75
SUTHERLAND
IOWA

City Meat Market

FRESH & CURED MEATS

FRUITS & VEGETABLES

FISH & OYSTERS

IN SEASON

ALWAYS GOOD AND FRESH

ADOLPH MUELLER

PHONE 70

Roy Schimmer

PLUMBING HEATING TINNING

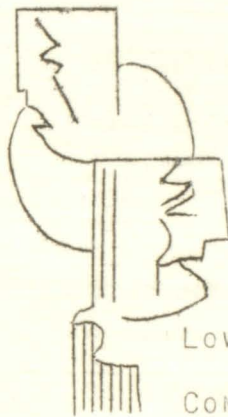
ELECTRIC WIRING

REPAIR WORK

A SPECIALTY

RESIDENCE PHONE 184

SUTHERLAND IOWA



NEWEST
PICTURES

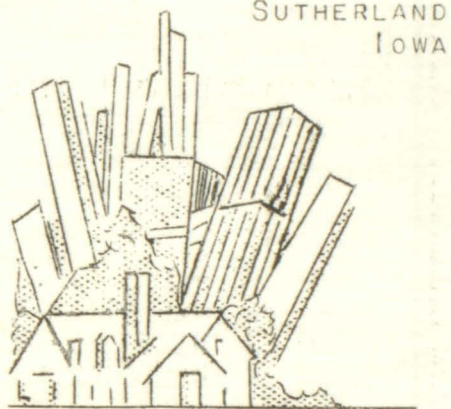
~~*

LOWEST PRICES

COMFORTABLE
SEATS

PLEASING SURROUNDINGS

*Sutherland
Theatre*



SUTHERLAND
IOWA

Thompson Yards Inc.

HOME OF 4 SQUARE
AND
GUIDE LINE LUMBER.

STANDARD
SERVICE STATION

GOODYEAR & ATLAS
TIRES

CALL 37 FOR ICE
DELIVERY

WE TAKE CALLS FOR
MOMSEN'S RENDERING
SERVICE

SUTHERLAND IOWA

DOUG'S CAFE

GOOD FOOD

OUR SPECIALTY

BRING YOUR FRIENDS

DINE AND DANCE

AT DOUG'S



HAND
HOSPITAL

V. C. HAND, M. D.

S. T. MOEN, M. D.

HARTLEY IOWA

A BOTTLE OF MILK
IS A BOTTLE OF HEALTH
IF IT'S PASTEURIZED.

PHONE 44

SUTHERLAND IOWA

GREENE'S Dairy

FOR LONG DISTANCE

AND

LOCAL TRUCKING

SEE

L. F. OLHAUSEN

PHONE 106

SUTHERLAND, IOWA

SWANSON'S

CASH

FOOD

STORE

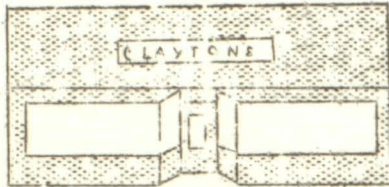
FOR

DELIVERY

SERVICE

PHONE 167

PAY CASH AND PAY LESS



Ranie's Variety Store

BUY YOUR
CLOTHING, DRY GOODS,
TOILET ARTICLES, TOYS,
NOTIONS, SCHOOL SUPPLIES
AND CANDY.

5¢ 10¢ \$1 AND UP

SUTHERLAND IOWA

"TRY US FIRST"

LAGE BROS.

WALL PAPER, PAINTS,
SCHOOL SUPPLIES
FAIRMONT ICE CREAM

PHARMACY

SUTHERLAND

AND

PAULLINA

PHILLIPS PRODUCTS

PROMPT

COURTEOUS

SERVICE

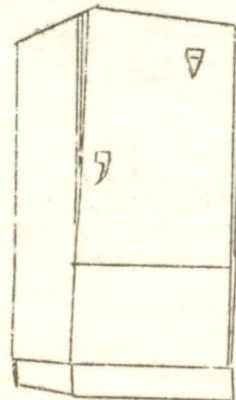
WASHING--GREASING
BATTERY--CHANGING
TANK SERVICE

OLHAUSEN

SERVICE STATION

SUTHERLAND

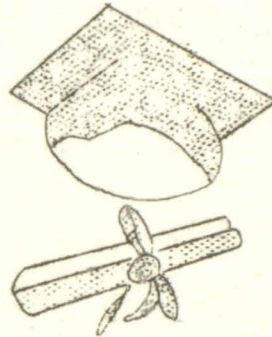
IOWA



HENRY'S APPLIANCE SHOP
FURNITURE,
HOT POINT APPLIANCES,
FIXTURES, SUPPLIES
SALES AND SERVICE
WIRING, PHIL GAS.

C. W. GREEN
R. F. GREEN

C. B. JENSEN
H. M. JENSEN



WE WISH TO EXTEND
OUR CONGRATULATIONS AND BEST WISHES
FOR THE FUTURE
TO THE MEMBERS OF THE 1941 GRADUATING CLASS.

Sutherland Creamery Co.

MANUFACTURERS OF FANCY CREAMERY BUTTER
AND PURE DRIED BUTTERMILK

SUTHERLAND
IOWA

PHONE
No. 13

J. E. DAHLBO, M. D.

PHYSICIAN

PHONE

RES. 55 OFFICE 203

SUTHERLAND

IOWA

Gamble Store

TIRES, BATTERIES,

PAINTS, HARDWARE,

WASHERS, RADIOS,

AND

ELECTRICAL APPLIANCES

BOB BURNS

Prop.

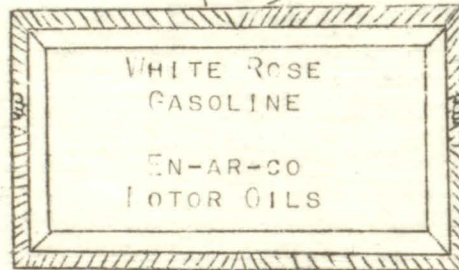
SUTHERLAND

IOWA

BERYL BROOKFIELD



SUPER
SERVICE
STATION



TANK
WAGON
SERVICE

PHONE

234

SUTHERLAND

IOWA

HAVE WEEKLY CHATS
WITH
SON OR DAUGHTER
AT COLLEGE
BY TELEPHONE

WEST IOWA
TELEPHONE CO.

LADIES'
READY TO WEAR

DRY GOODS
SHOES

GROCERIES

MEN'S AND BOY'S
FURNISHINGS AND SHOES

C.W. Johannsen
DEPARTMENT STORE
SUTHERLAND IOWA



JOHNNY WILL BE HOME IN
TIME FOR DINNER TONIGHT
FOR HE HEARD HIS MOTHER
CALL US UP AND ASK US
TO DELIVER A QUART OF
OUR FRESH FROZEN STRAW-
BERRY ICE CREAM.

M_D & M_D

Ice Cream Store

SUTHERLAND, IOWA PHONE 9

MAX SHOUSE
TRUCKING SERVICE
AND
SERVICE STATION

PHONE 161

SUTHERLAND, IOWA

CALL OUR HATCHERY
FOR BABY CHICKS



M. & J. R. Hakes

PHONE 97

LANG'S CAFE

PAULLINA, IOWA

SANITATION

COURTESY

SERVICE

WONDERLAND
THEATER

LATEST OF PICTURES

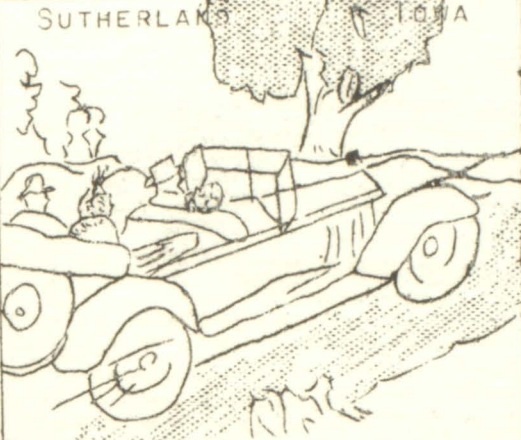
CONTINUED SHOWS

ON SUNDAY

PAULLINA

IOWA

SUTHERLAND IOWA



CALL 179


Heckert's
STANDARD SERVICE

OILS
GASOLINE & LUBRICATION

Harold Elsbury

CORNSHELLING
THRESHING
PLOWING
CORNPICKING


PHONE 128



SLAGLE AND Co.

LUMBER

ALSO
BUILDING MATERIALS



PHIL HOFFMAN
MGR.



CONGRATULATIONS

CLASS

OF '41

**

MEALS

SHORT ORDERS

LUNCHESES

Wilby's

Keene

PHONE 11

SUTHERLAND

Cafe

BOWLING FOR RECREATION

DR. LEO C. HARRISON

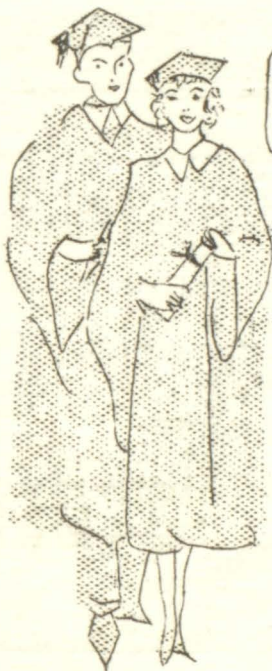
OSTEOPATHIC PHYSICIAN

PHONES--OFFICE 11
RES., 345

OVER GOLDEN RULE STORE
SURLER BLDG.

CHEROKEE

IOWA



Charles E. Cooper

CAP AND GOWN

COMPANY

MASON CITY, IOWA

Brownies
Barber Shop

LOOK FIT

AND

FEEL FIT

DR. RALPH C. LONG

DENTIST

SUTHERLAND

IOWA

PHONE

67

IT HAS TO BE GOOD!

IF WE HOPE TO CONTINUE TO MERIT YOUR
GOOD WILL AND PATRONAGE, WE KNOW THAT WE
MUST SUPPLY YOU WITH QUALITY GROCERIES
THAT NEVER DISAPPOINT; THAT'S WHY WE RECOMMEND
AND SELL WELL KNOWN BRANDS.

TRADING POST GROCERY

WE DELIVER

SUTHERLAND, IOWA

TELEPHONE 1.

Moore's Cafe

NEW AND AIR
CONDITIONED

DINNERS, LUNCHEES
SHORT ORDERS
SODA FOUNTAIN SERVICES
MAGAZINES AND CANDY.

SUTHERLAND IOWA

NEXT SCHOOL PARTY

SKATE

AT

HARTLEY ROLLER

RINK

DINE

AT

NEEBLES

HARTLEY

IOWA

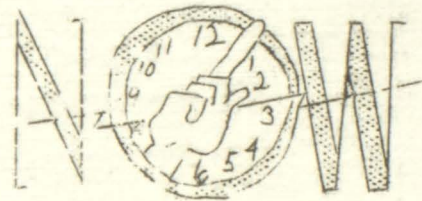
Johann's Grocery

THE HOME
OF
QUALITY GROCERIES

OUR PERSONAL
RECOMMENDATION OF ANY
FOOD PRODUCT IS YOUR
GUARANTEE.

PHONE
41

SUTHERLAND
IOWA



IS THE TIME

TO BUY

CASE FARM MACHINERY

FROM

C. Brookfield

DR. L. H. MARTICE

PHYSICIAN

AND

SURGEON

PHONE 4

SUTHERLAND
IOWA

PETER'S LIVE STOCK CO.

LET US HANDLE

YOUR

LIVE STOCK

WE SHIP ON WEDNESDAY
AND SATURDAY

SUTHERLAND
OFFICE PHONE No. 5.

Skelly Courtesy Service



PINKIE DAVIS

FUNNY JOHANSEN

PHONE 143

SUTHERLAND
IOWA

O.L. Smith
MACHINE WORK

"EQUIPPED TO DO THE
MOST EXACTINE KIND OF
WORK."

GENERAL REPAIRING

SUTHERLAND RESIDENCE
IOWA PHONE 129

OLIVER TRACTORS
AND MACHINERY



